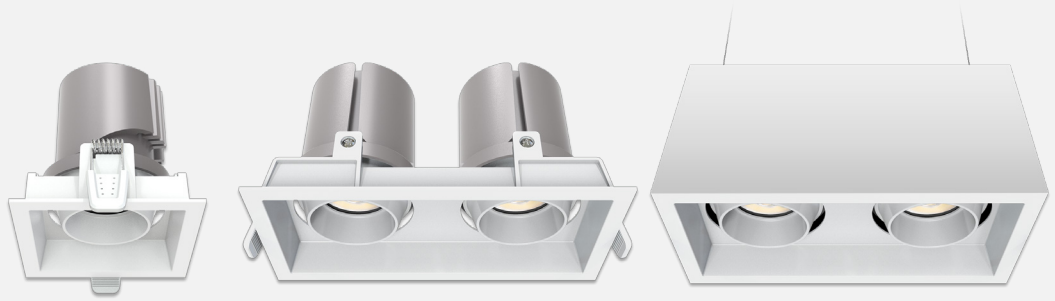


**PARIS
DOWNLIGHTS**
3", 4", 5" Euro Collection



[FEATURES]

Paris downlight multiples with glare free design prohibits direct view of the LED creating high visual comfort. Features dual 30° gimbals for precision aiming with single head and double head models. Modular design with separate mounting ring and light engine allows for easy installation, replacement and maintenance from below ceiling. Enclosure available for suspended option. Ideal for ambient or accent lighting in residential, hospitality, commercial and retail stores.

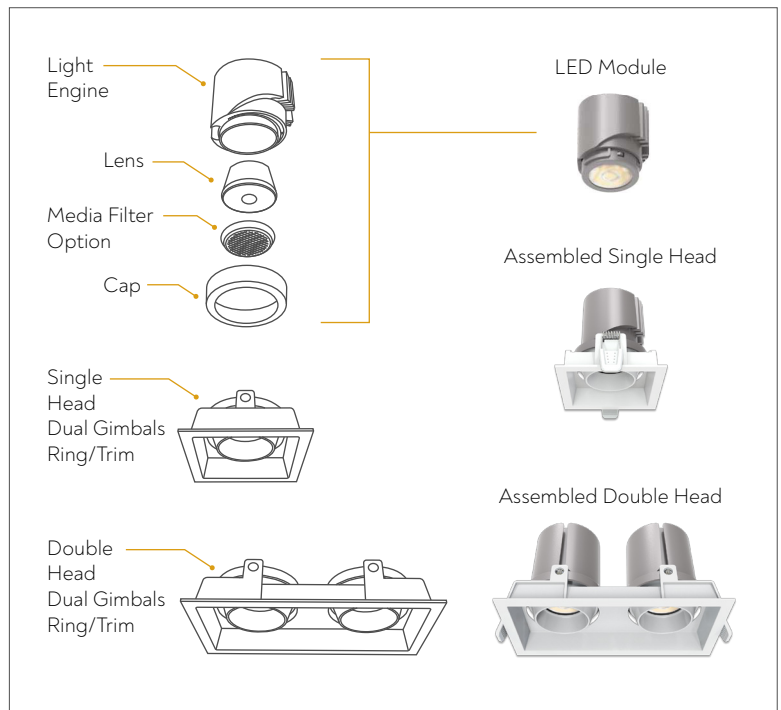
[LUMINAIRE INFORMATION]

RECESSED 

Product Detail

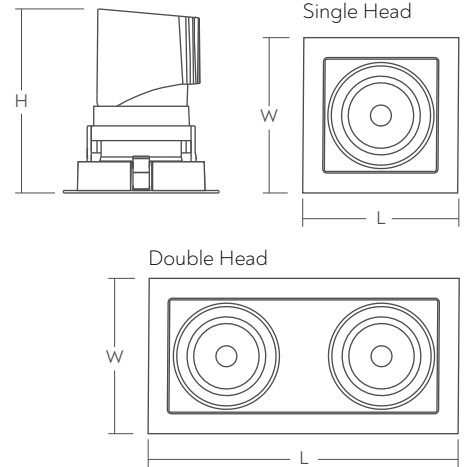


Lumens/Watts	1100lm/15W ¹ - 3 Inch
(Single Head, 3000K)	1700lm/20W ² - 4 Inch
	2000lm/25W ² - 4 Inch
	2400lm/30W ³ - 6 Inch
	2800lm/35W ³ - 6 Inch
Input Voltage	120-277V
Efficacy	Up to 90lm/W
CRI	>90Ra
Beam Angle	38° (Standard) , 24°, 55°
CCT	3000K, 3500K, 4000K
Dimming	0-10V (20W-25W Standard), Phase Dimming 10-100% (15W Standard), Dual (Consult Factory)
Ingress Protection	IP20 Dry Location
Warranty	5 yrs
Certification	



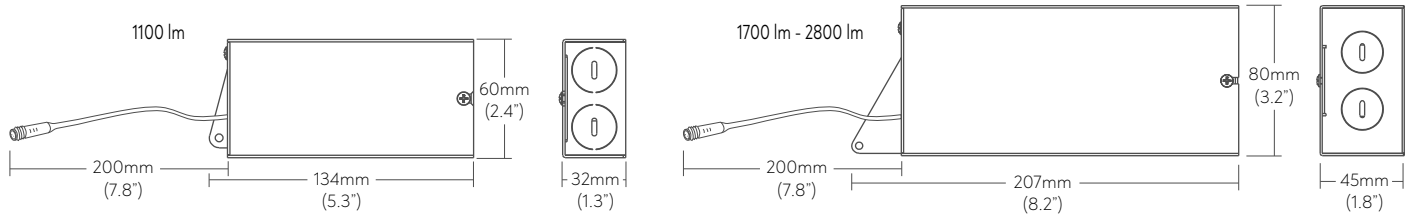
[DIMENSIONS]

Euro Collection / Model	L x W	H	Cutout Size L x W
EURO3 / 3 Inch* Paris Single Head PAR3-1	90x90mm (3.54"x3.54")	95.5mm (3.76")	80x80mm (3.15"x3.15")
EURO3 / 3 Inch* Paris Double Head PAR3-2	175x90mm (6.89"x3.54")	95.5mm (3.76")	165x80mm (6.5"x3.15")
EURO4 / 4 Inch* Paris Single Head PAR4-1	110x110mm (4.33"x4.33")	112mm (4.42")	95x95mm (3.74"x3.74")
EURO4 / 4 Inch* Paris Double Head PAR4-2	220x110mm (8.66"x4.33")	112mm (4.42")	205x95mm (8.07"x3.74")
EURO6 / 6 Inch* Paris Single Head PAR6-1	130x130mm (5.12"x5.12")	140mm (5.51")	115x115mm (4.53"x4.53")
EURO6 / 6 Inch* Paris Double Head PAR6-2	266x130mm (10.47"x5.12")	140mm (5.51")	245x115mm (9.65"x4.53")



NOTE: Double head requires 2x drivers

[DRIVER ENCLOSURE]



[ORDER CODE]

MODULE					DRIVER	
COLLECTION EURO3 - PAR3 EURO4 - PAR4 EURO6 - PAR6	BEAM ANGLE 38D - 38° (Standard) 24D - 24° 55D - 55°	CCT 30K - 3000K 35K - 3500K 40K - 4000K Consult factory for other CCT	CRI 90 - 90CRI	LUMENS 11 - 1100lm ¹ (3" Standard) 20 - 2000lm ² (4" Standard) 17 - 1700lm ² 24 - 2400lm ³ 28 - 2800lm ³	DIMMING V - 0-10V DIMMING (20W-35W) T - PHASE DIMMING (15W ONLY) X - DUAL 0-10V & PHASE DIMMING (Consult Factory)	VOLTAGE UNV - 120-277V

TRIM					OPTIONS	
MODEL PAR3 - PARIS 3 INCH* PAR4 - PARIS 4 INCH* PAR6 - PARIS 6 INCH*	TRIM SQ - SQUARE	TRIM INTERIOR WH - WHITE (Standard) BK - BLACK Consult factory for other colours	TRIM FINISH WH - WHITE (Standard) BK - BLACK Consult factory for other colours	# OF HEADS 1 - 1 HEAD ⁴ 2 - 2 HEADS ⁵	MEDIA FILTER HC - HONEYCOMB SL - SOFT LENS	NEW CONSTRUCTION PLATFORM (Blank) - NONE NCS1 - ADJUSTABLE 2" - 6" SQUARE NCS2 - FIXED 3", 4", 6" PARIS DOUBLE HEAD

ENCLOSURE*		
SIZE 42 - 4 INCH DOUBLE HEAD 62 - 6 INCH DOUBLE HEAD	FINISH WH - WHITE BK - BLACK Consult factory for other colours	MOUNTING SE - SUSPENDED* SM - SURFACE MOUNT

- * Nominal size
- 1. Available for 3 inch model only
- 2. Available for 4 inch model only
- 3. Available for 6 inch model only
- 4. One driver required for single head
- 5. Two drivers required for double head
- 6. 3.3m lead wire and 3.25m adjustable AC cable provided
- 7. Not available for 3 inch or single head models