



**WARNING**

**IMPORTANT:** Read and follow these instructions before installing or maintaining this product.

Risk of Electrical Shock! Disconnect power at fuse or circuit breaker before installing or servicing.

Installation and servicing to be done by a certified electrician.

Incorrect wiring will result in irreparable damage to LED and power supply.

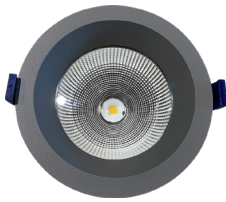
Do not energize the LED Engine until the protective packaging has been removed.

Do not touch the yellow surface of the LED as it may damage the light engine.

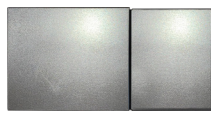
**SAFETY:** When using electrical equipment, basic safety precautions should always be followed, including the following:

1. This unit is for recessed mounting only. Do not use in hazardous locations nor near gas or electric heaters.
2. Do not use this equipment for other than the intended use.
3. Install only in accordance with National Electrical Code and local regulatory agencies' requirements.

**Includes:**



Downlight (1x)

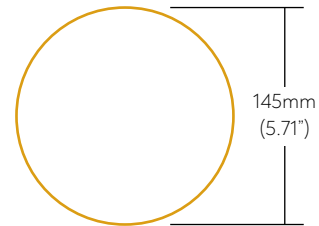


Driver (1x)



Wire Connectors (3x)

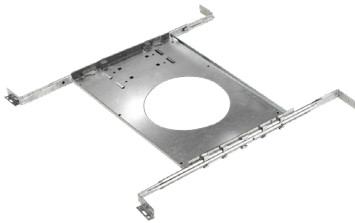
**Cutout Size:**



**A**

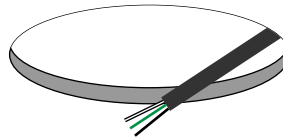
**B**

**1**



If applicable, install new construction housing platform. Proceed to step "2" for installation without new construction housing platform.

**2**

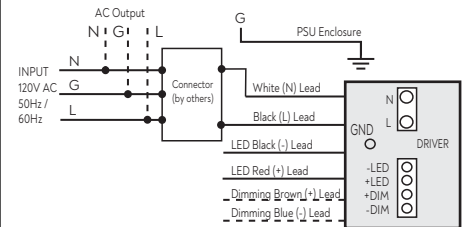


Cut hole to appropriate size for downlight model. See "B".

Ensure line voltage is powered off and there is enough wire to safely perform installation below the ceiling. Use proper wire type according to local building code.

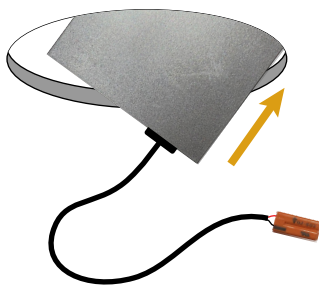
**3**

**Driver Wiring Diagram**



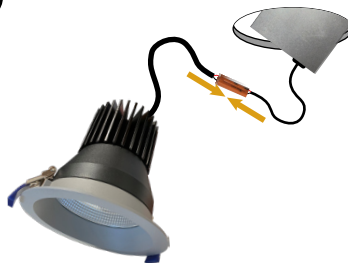
Connect Line (black), Neutral (white) and Ground (green) to driver. Dotted line wiring if needed.

**4**



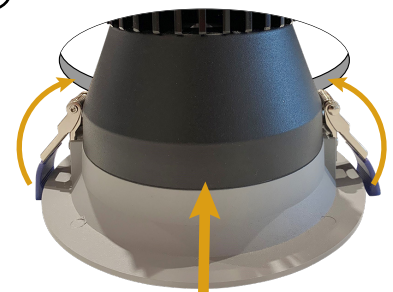
Insert driver through ceiling cutout, leaving access to quick connect wire.

**5**



Ensure line voltage is powered off. Insert each end of the quick connect wires together until an audible click is heard.

**6**



Push spring clips up and insert into ceiling cutout until trim is flush with ceiling.

